

Weekly Bulletin

This half-term's REACH value is: Engage

23 May 2025



Message from the Head of School

Well done to all Year 11 students this week, for all their hard work. You are now half way!!!!.

Thank you to all the pupils who donated money today for the non-uniform day. All monies raised are for the Royal British Legion.

The police have been in school this week, to talk to the students regarding road safety and also to support the operation of Sceptre, a national knife crime awareness week.

A thank you to all parents/guardians and carers for their continued support and wishing you all a relaxing and enjoyable bank holiday weekend.

Arbor Pay

Starting after May Half Term, we will no longer be using Parent Pay for cashless catering. Instead, we will fully transition to Arbor Pay, which is already in use for Trips, Clubs, and the School Shop.

You can continue adding funds to your Parent Pay account until Monday 26th May. Do not top up any Parent Pay balances after this date. During the half-term break, any remaining balances will be transferred to Arbor Pay.

Once the new system has been migrated to, we will send notify you. However please ensure that your account has at least £5 of credit to cover meals on Monday, 2nd June, as you may not have the opportunity to top up during the half-term period.

Weekly Bulletin



Follow us



Follow us on Facebook
for updates and news
for everyone!



Arbor

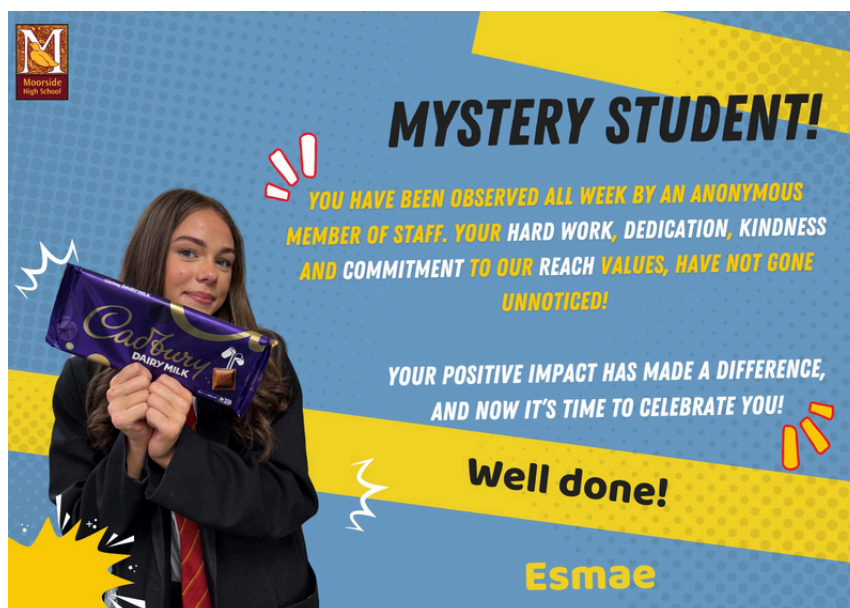
Download the Arbor app to
keep up to date with
Attendance, House Points etc

Achieve

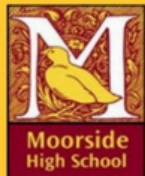
Aspire to be the
best and be
prepared to take
risks along the way.



Well done!



Weekly Bulletin



HOUSE SYSTEM

THIS WEEKS HOUSE
LEAGUE TABLE

1st

160353



2nd

156876



3rd

156286



4th

154090



5th

148231



Weekly Bulletin



Sweet Jar Competition Success!

We're delighted to share that the Sweet Jar competition has raised £40.50 towards the Year 11 Prom Fund.

A huge well done to all involved for their contributions and support in helping our school community.

Students are especially commended for their **generosity** and **enthusiasm**—thank you for making it a success!

Well done to Sophie D and Sam H for being the winners



Weekly Bulletin



Kindness Raffle Winners!



Jamie Oliver World Record

The food department are taking part in the Jamie Oliver World Record attempt for the biggest cookery lesson in the world. It will take place on 1st July at 11am. Link attached for further details.
Jamie's 2025 Pasta Champions | Guinness World Records

Weekly Bulletin



AI Rules and Guidance for Exams

What students need to know:

- Work submitted for assessment must be your own and reflect your knowledge, skills, and understanding.
- Misuse of AI (copying, paraphrasing, or failing to acknowledge AI-generated content) is malpractice.
- AI generated content must be properly referenced and reliance on AI will not earn marks.
- AI misuse can lead to disqualification or a ban from future qualifications.
- You must sign a declaration confirming your work is your own. False declarations have serious consequences.
- Understand and follow your school's malpractice policy.
- Be aware that AI detection tools may be in use, and examiners and assessors can identify AI generated content.



Weekly Bulletin

AI Rules and Guidance for Exams



AI and Assessments

A quick guide for students



What is AI?

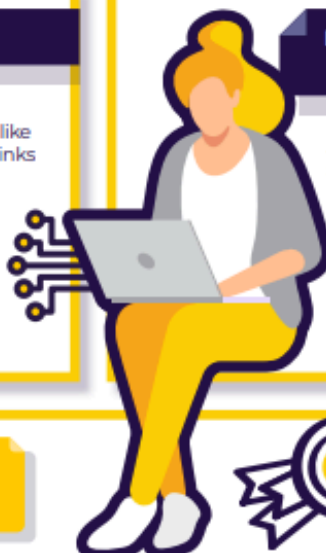
- AI stands for artificial intelligence and using it is like having a computer that thinks
- AI tools like ChatGPT or Snapchat My AI can write text, make art and create music by learning from data from the internet, but watch out – they can also make things up and be biased



How can AI be misused in assessments?

AI misuse is when you take something made using AI and say it's your own work.

THIS IS CHEATING!



How do I make sure I don't misuse AI?



1 Know the rules

- You're **not allowed** to use AI tools when you're in an exam
- Your teachers will tell you if you're allowed to use AI tools when doing your coursework – the rules will depend on your qualification
- Even if you're allowed to use AI tools, you can't get marks for content just produced by AI – your marks come from showing your own understanding and producing your own work

2 Reference reference reference!

- If you're allowed to use AI tools, you must reference them clearly
- Name the AI tool you used
- Add the date you generated the content
- Explain how you used it
- Save a screenshot of the questions you asked and the answers you got

3 Declare it's all your own work

– When you hand in your assessment, you have to sign a declaration. Anything without a reference must be all your own work. If you've used an AI tool, don't sign the declaration until you're sure you've added all the references

REMEMBER

Misusing AI is cheating!

Know the rules

Talk to your teachers

Reference clearly

What happens if I misuse AI?

If you've misused AI, you could lose your marks for the assessment – you could even be disqualified from the subject.

DON'T RISK IT!



Weekly Bulletin



Birthdays!

*Celebrate your Birthday
with us at School.*

🌟🌟 Your special day just got even better!
Did you know that if you come to school on your birthday,
we've got an extra surprise waiting just for YOU? 🌟🌟

Head over to Student Reception to claim your sweet
birthday prize—a little token of celebration because YOU
deserve it!

We enjoy seeing our amazing students shine on their
special day, and we're so grateful you've chosen to spend
part of it with us!

Don't miss this chance to make your birthday
unforgettable! Stop by and let us add some extra sparkle
to your day.

🎁 HAPPY BIRTHDAY from The Attendance Team
Thank you for being here 🎁

Weekly Bulletin



Attendance

As we continue our journey through the school year, let's take a moment to talk about something that's crucial for your child's success: **ATTENDANCE!**

Every day your child spends in school is an opportunity to learn, grow, and connect with teachers and classmates.

Here's why showing up matters:

Unlock Your Potential: Each class builds on the last: By being present, you absorb knowledge, participate in discussions, and engage in activities that enrich your understanding. Every lesson is a step toward your goals!

Build Connections: School is not just about academics; it's also about friendships! Your peers are your support system. Being present allows you to forge connections that can last a lifetime.

Boost Your Confidence: Attending school consistently helps you stay on track, reduces stress, and boosts your confidence in your abilities. You've got this!

Prepare for the Future: Regular attendance cultivates responsibility and discipline—key traits for success in any career. Your future self will thank you for the effort you put in today!

Let's commit to making attendance a priority!

Remember, each day in school is a chance to learn something new and create lasting memories. Show up, shine bright, and make the most of every opportunity!

Congratulations to 513 Students for Reaching 100% Attendance in April!

We are incredibly proud to celebrate our students who have shown outstanding commitment by achieving 100% attendance! Their dedication to their education, resilience, and consistent efforts are truly inspiring. This accomplishment speaks volumes about their hard work and determination. Keep it up, and continue striving for excellence!

Well done, everyone!
The Attendance Team



Weekly Bulletin



Our Attendance Target is 95%



Why is it Important?

- Regular school attendance is vital for success, relationships and development
- Excellent attendance supports learning, reliability and prepares students for life beyond education

Absence Guide

- Phone the attendance line 01782 551200 (press 1) before 8.30 am
- Leave a message each morning your child is absent and/or if they are absent due to an appointment - *this is a safeguarding requirement*
- If we do not hear from you, then an absence email will be sent
- If no response is received, a phone call will be made and we may conduct a home visit
- Non-attendance to AM / PM form will result in an unauthorised mark which will affect your child's attendance
- We do NOT have a 24 / 48 hour sickness policy

Medical Appointments

- Make appointments, where possible, outside of school hours
- If this is not possible students should attend school for as much of that day as possible
- Email in the appointment card/letter so the absence can be authorised

Holidays

- Any holidays, during term time, will not be authorised unless it is an extreme circumstance
- A leave of absence request must be completed in advance. Forms can be obtained from the School website or Student Reception
- Parents / Carers may be issued with a penalty notice if your child is absent due to a holiday

0 days absent **190** - School days in each year = 100%

10 days absent **180** - Days in school = 95%

19 days absent **171** - Days in school = 90%

29 days absent **161** - Days in school = 85%

38 days absent **152** - Days in school = 80%

47 days absent **143** - Days in school = 75%

Late to school = lost learning

Minutes late	Impact on attendance in a year
5 minutes late per day =	3 days lost each year
5 minutes late per day =	9 days lost each year
0 minutes late per day =	19 days lost each year
5 minutes late per day =	28 days lost each year
0 minutes late per day =	38 days lost each year

Every school day counts BUT every minute is equally important!!

Empowering all to Thrive, Engage and Achieve

Weekly Bulletin



  **SHOW UP AND WIN BIG!**  

Be in school from January 2025 to July 2025!!

This is your chance to turn 100% attendance into an EPIC REWARD!


100 Perfect Attendance = Automatic Entry

 **Prize Draw Includes:**

A brand-new Xbox Series X (KS3) 

The incredible Fire Max 11 Tablet (KS4) 

- ✓ Come to school every day
- ✓ Stay committed
- ✓ Get rewarded like never before!

 **Don't miss out - your perfect attendance could make you the lucky winner!**

Are YOU up for the challenge? Let's make it happen! 



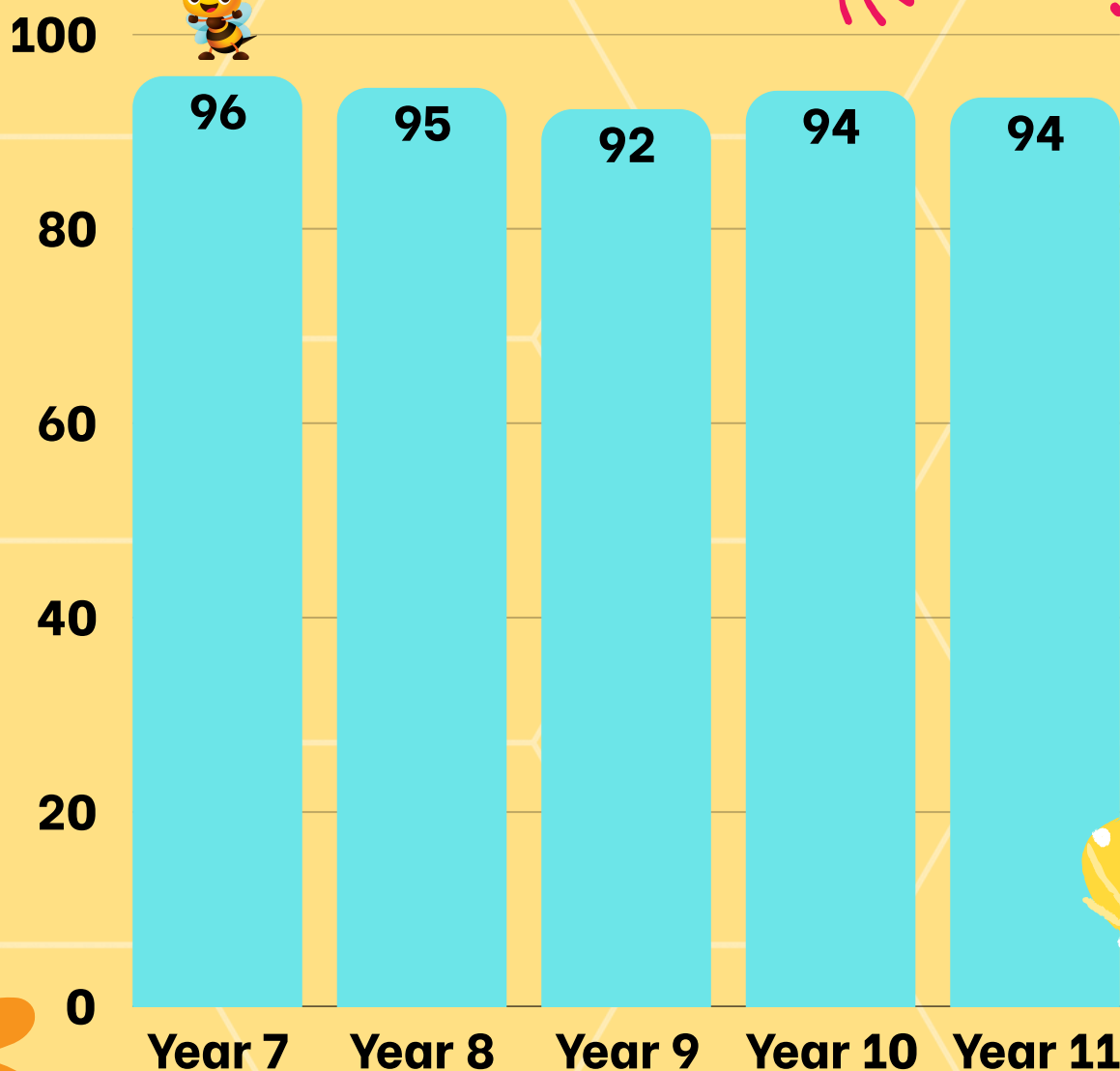
GIVEAWAY



Weekly Bulletin



Who's going to
Amazing?



This week, we are excited to announce that **Years 7** have achieved the highest attendance!

But the pressure is on! Who will rise to the challenge next week? Let's keep up the momentum and aim for those perfect attendance records!

Remember, every presence counts!

Let's see who can be Queen Bee and take the crown next week!

Weekly Bulletin



Tell Us!

We want to hear from you!

Your Feedback Matters!

To improve our programs and support your child better, please take a moment to share your thoughts on:

- What's working well at our school?
- Areas where we could improve.
- Suggestions for workshops or resources you'd like to see.

You can provide your feedback by emailing us:

office@mhs.potteries.ac.uk