



Moorside High School

Art Department
Portfolio Examples



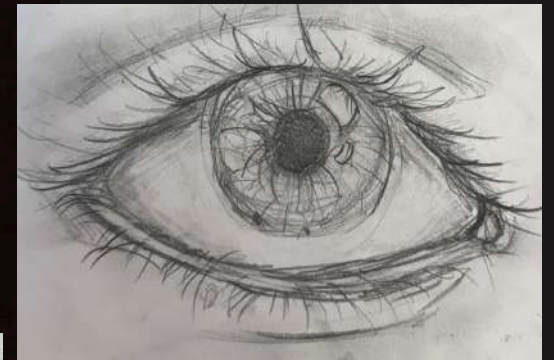
YEAR 7



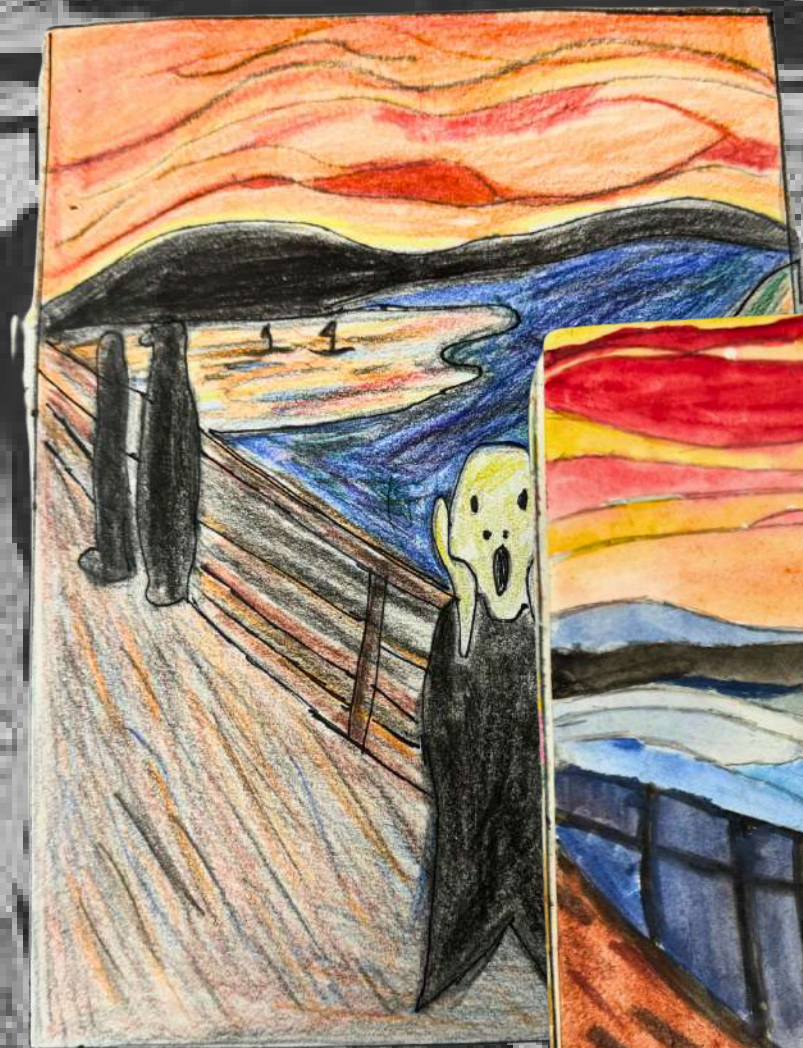
TOPIC ONE:
PLANTS AND
NATURAL FORMS

INTRODUCING
BEATRIZ
MILHAZES

TOPIC 2: CHIAROSCURO



The Scream





Topic Three The Environment





**HUNTERWASSER
MEETS THE
POTTERIES**

YEAR 8



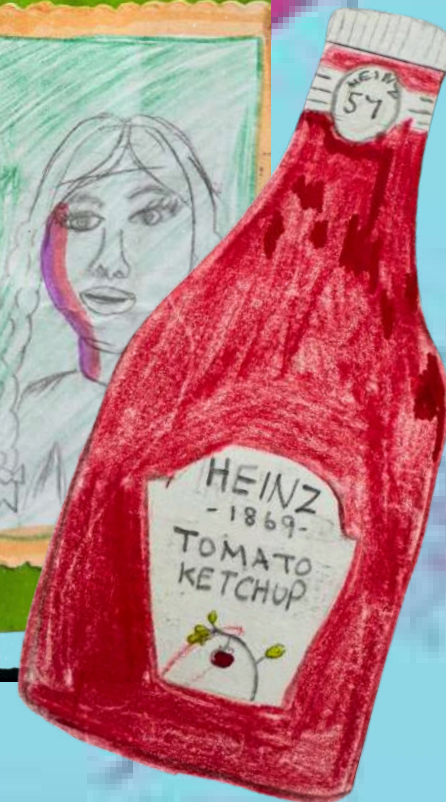
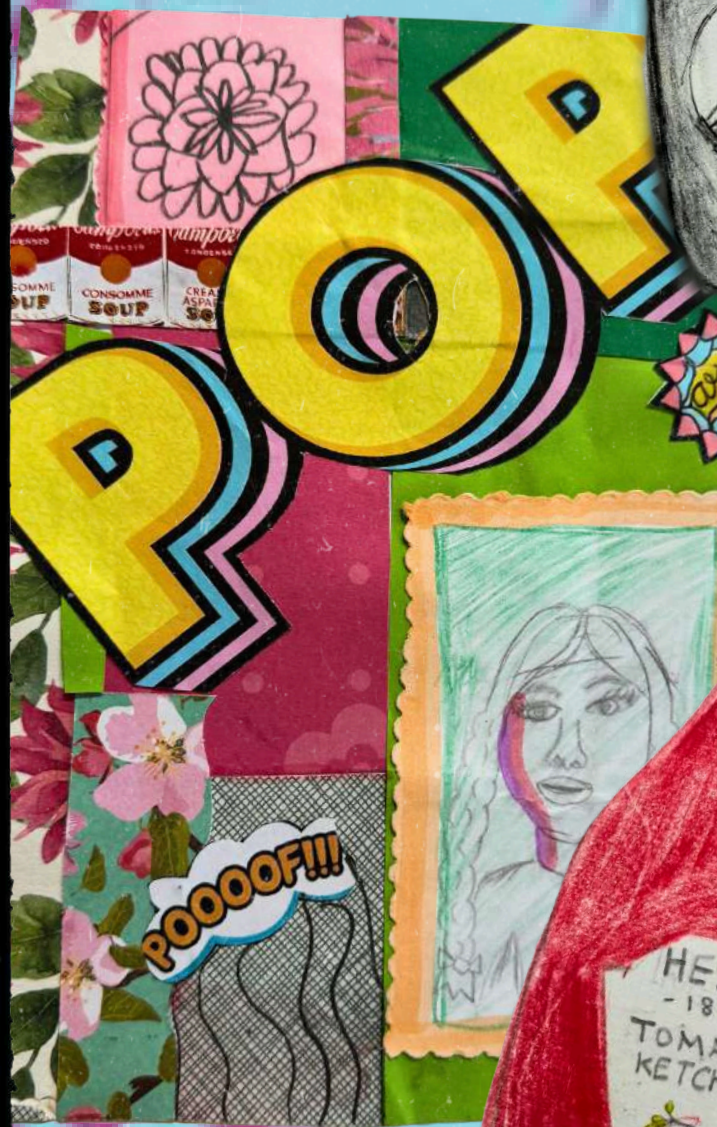
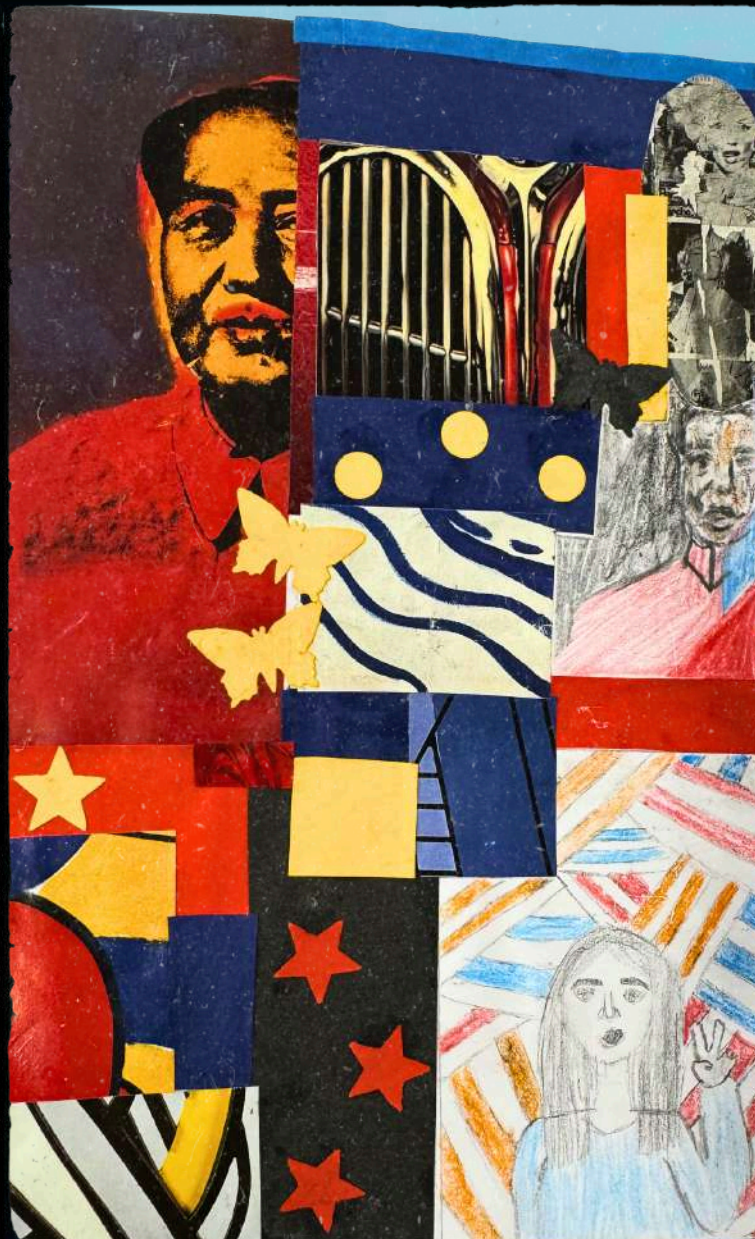


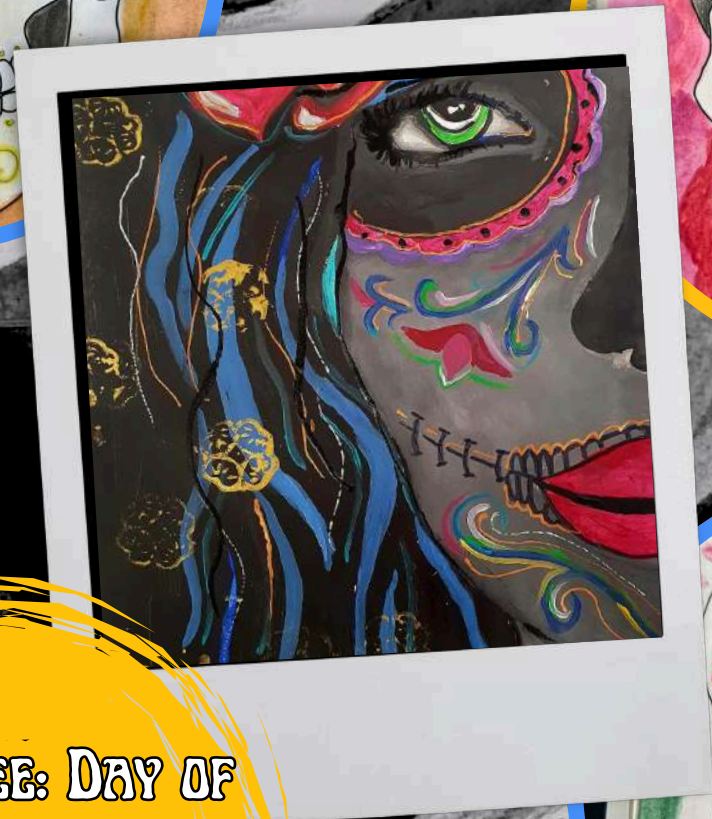
TOPIC ONE THE
ARCIMBOLDO
PROJECT



TOPIC TWO
THE POP
ART
PROJECT







TOPIC THREE: DAY OF
THE DEAD OR
VALENTINA RAMOS

AN INTRODUCTION TO THE GCSE IN ART AND DESIGN

THE PRINCIPLES OF DESIGN

YEAR 9



Choices of colour and the relationships between colours have a huge influence on how a piece of art or design looks and feels and the emotions it provokes.

Warm colours are said to advance towards you as if they are jumping out of the painting. These colours can be exciting and energetic and will catch the viewer's attention by drawing their eye towards them.

A tint is where an artist adds white to create a lighter colour.

A shade is where an artist adds black to a colour to darken it.

A tone is where an artist mixes grey into a colour.

Texture in art concerns the surface of a piece of work.

Prickles

Woven

Pluff

Etch

Shape is the external lines, the contours or the outlines of a subject. The shapes can be used to show depth or 3-dimensions. For example in this painting shapes are used to create a

Definition
Space refers to a feeling of depth or three dimensions. There is negative and positive space.

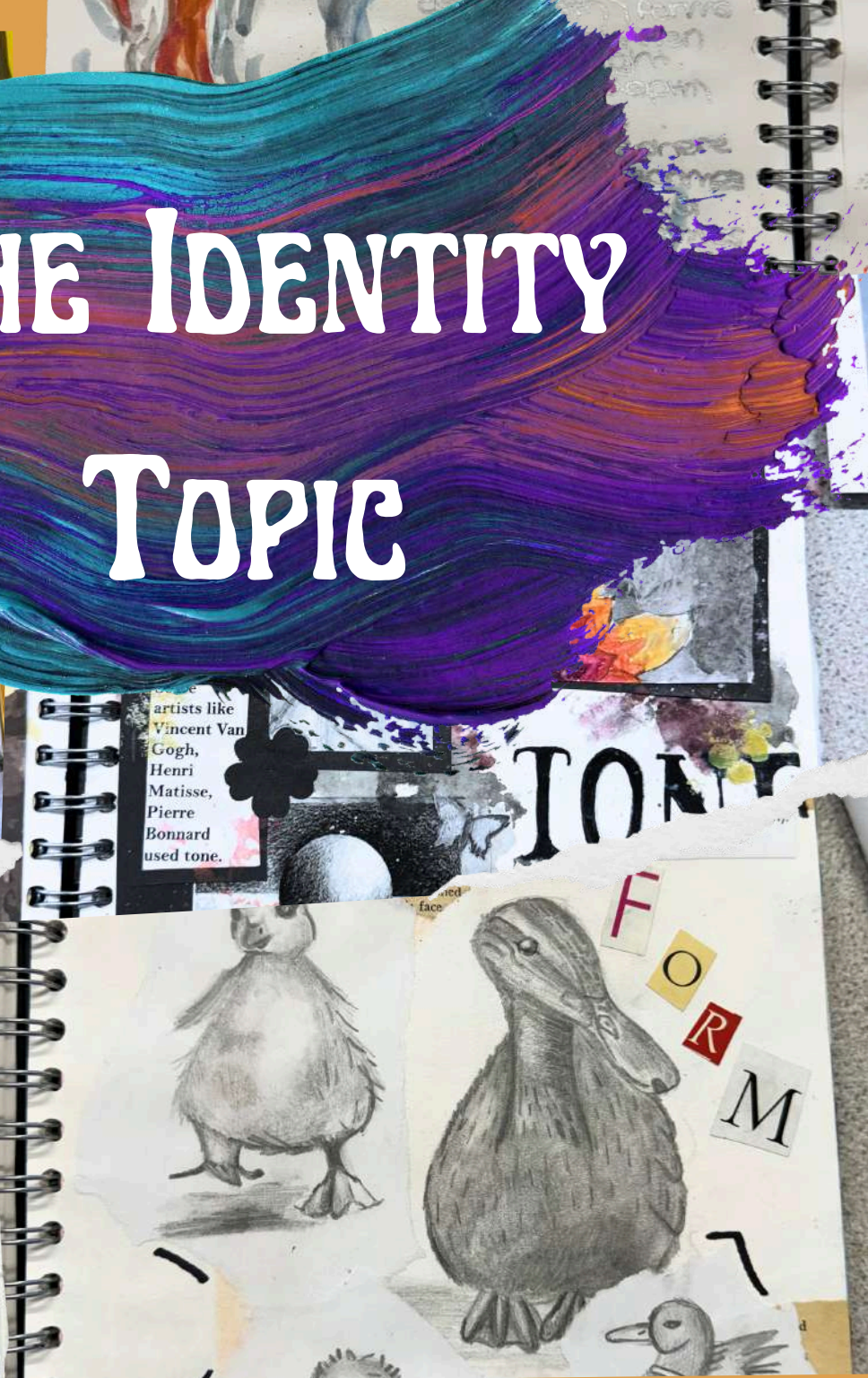
PAGE

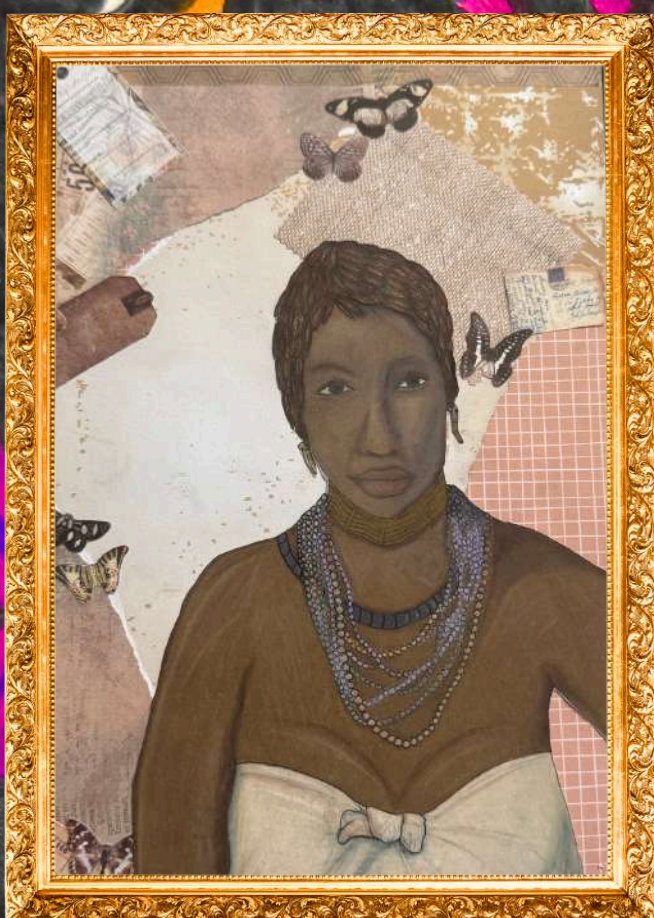
TEXTURE

Vincent Van Gogh was a Dutch Post-Impressionist painter, who is among the most famous and influential figures in the history of Western art. He was born in March 1853 and died in 1890. He suffered from psychiatric illness and as a result he cut off his ear. Despite this, Van Gogh made some outstanding

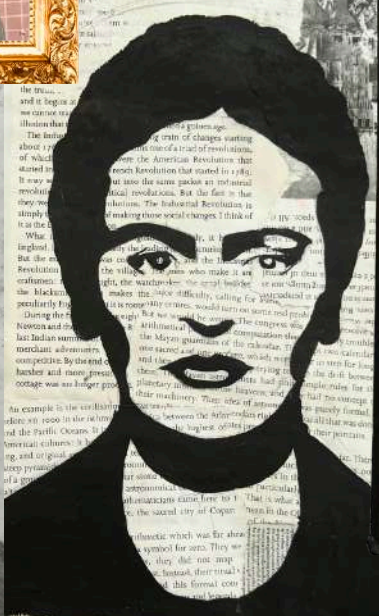
In 1935, M.C. Escher created this piece entitled 'Hand with a

Project





Composition





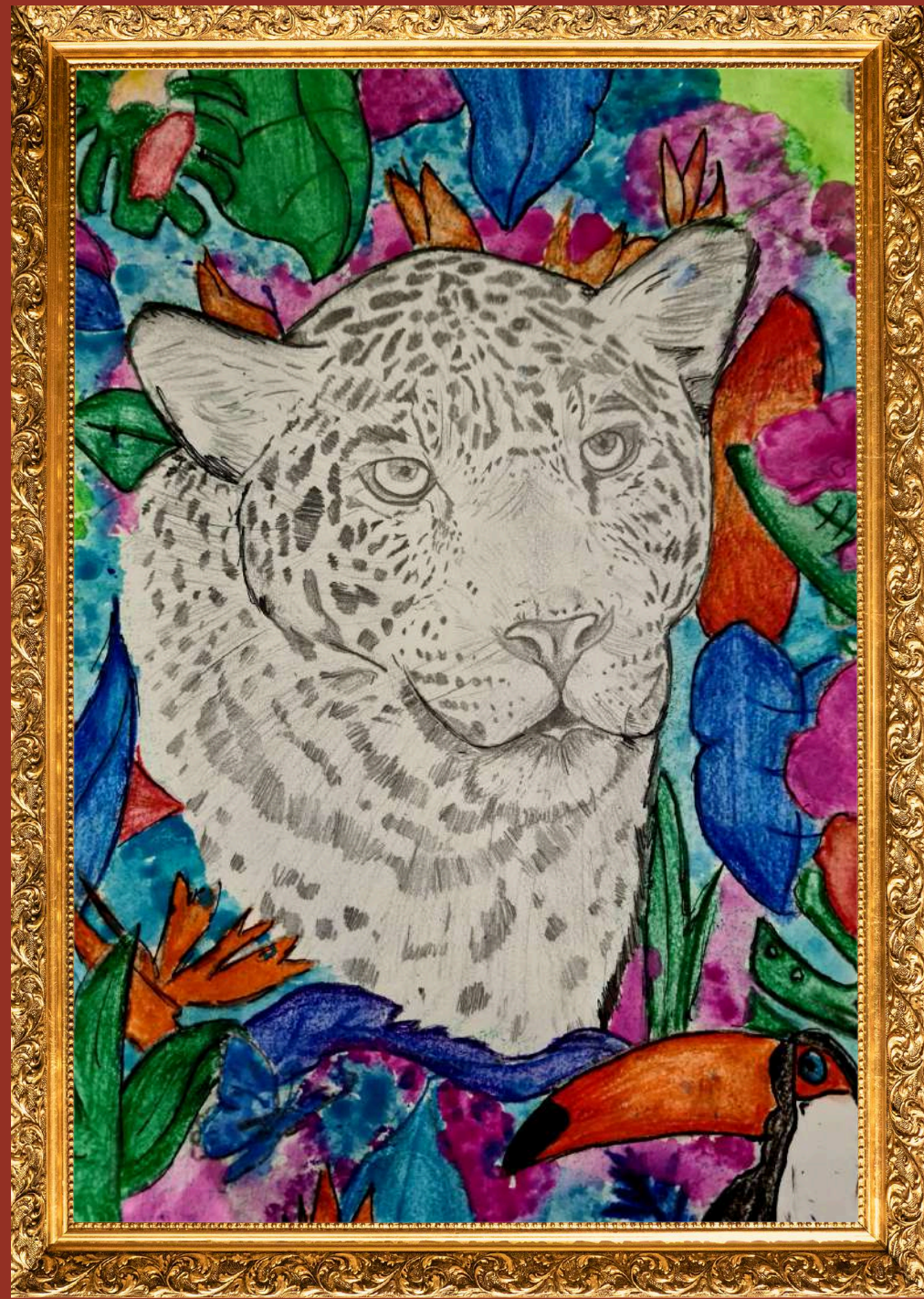
Year 10

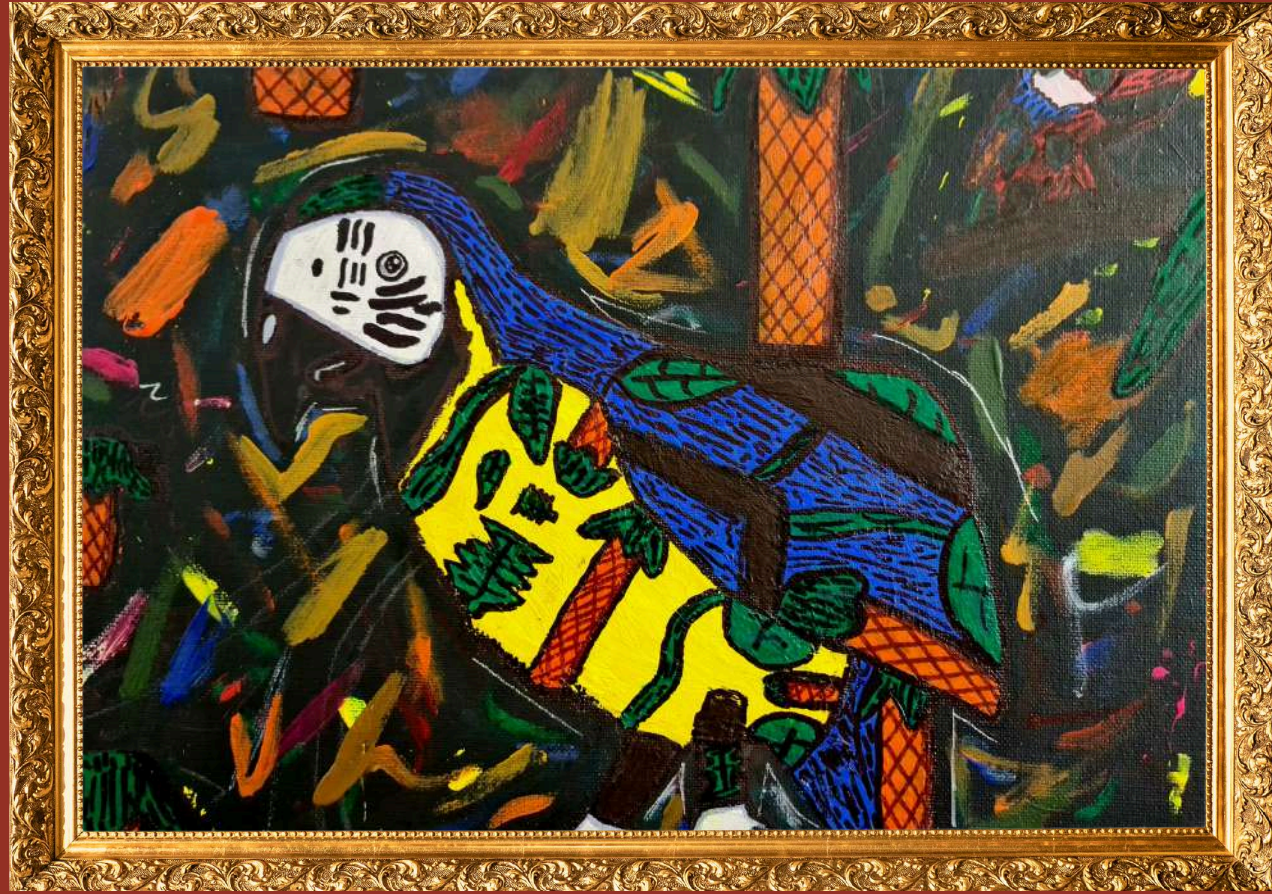


GCSE THEMES MAY VARY

An exploration of Habitats







FINAL OUTCOMES







Confectionery





PENCIL STUDIES

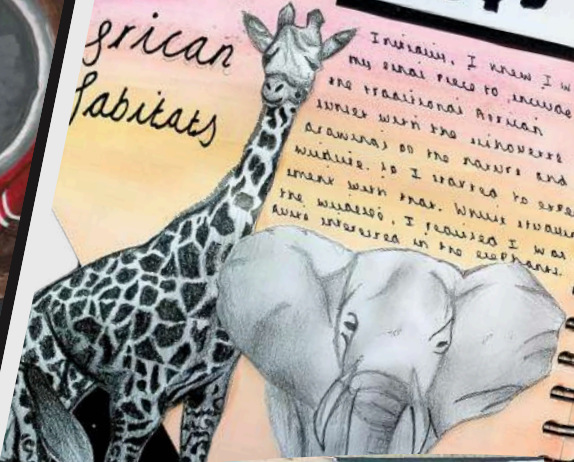
On this page I have explored the form and shape of flies, which I have chosen as my animal to study further.



COLOUR STUDIES...



African Habitats



Initially, I knew I wanted my final piece to include the traditional African animals, so the elephant and zebra were the obvious choices. I started to sketch the animals, but I realised I was more interested in the elephants. So, I started to sketch the elephants. I saw a photo of an elephant and I was inspired. I decided to do a second design, which included the elephant and the zebra.

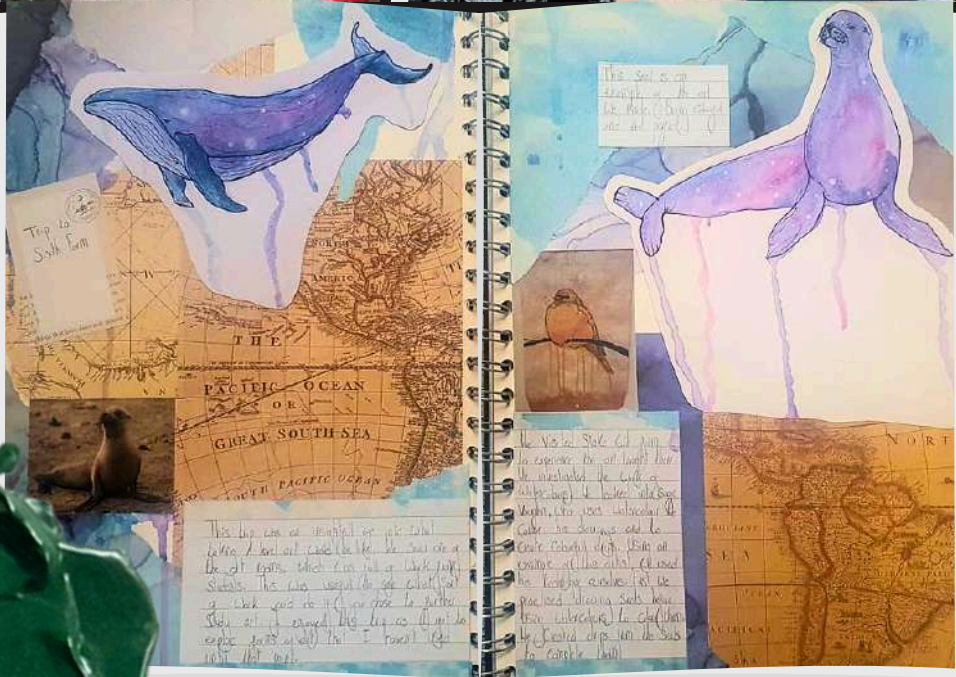
AFRICAN



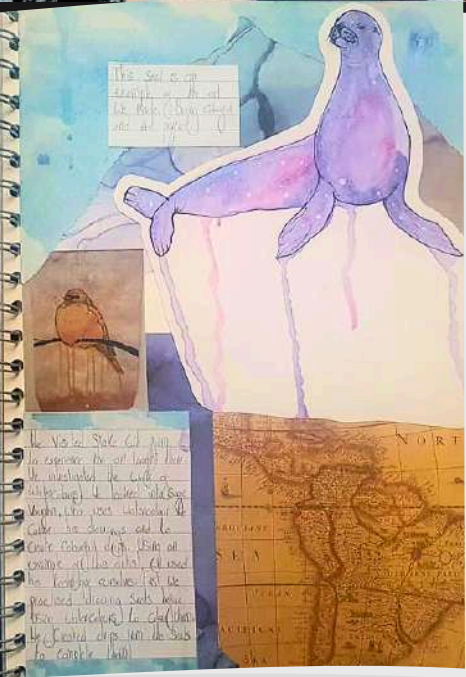
landscapes



dwellings & flora



This is a collage of a whale and a seal. The whale is blue and the seal is purple. The background is a map of the Pacific Ocean and Great South Sea.



The Seal is a purple color and the bird is a brown color.



On this page I have explored the form and shape of seals, which I have chosen as my animal to study further. I saw a photo of a seal and I was inspired. I decided to do a second design, which included the seal and the bird. I saw a photo of a seal and I was inspired. I decided to do a second design, which included the seal and the bird.

FINAL PORTFOLIO EXAMPLES



Observations

black bird:
Bird isn't my favourite material as I find it difficult to create any dimension but the result is okay. It's not a material I would like to use for my final piece.

CHARCOAL
I observed different materials' realism and outcomes on both the focus (animal) and scenery (flowers) - to fit the theme. This is to determine which materials I'll use in my final piece.
Charcoal isn't a material I use often and upon experimenting with it, I did like its outcome but it's monotone colour doesn't fit the bright mood and feel I'd like my final piece to obtain. (This also applies to my pencil study.)

pencil studies
I practised painting lavenders with watercolour to experiment in order to determine whether to use it in the scenery of my final piece. I do enjoy using watercolour, but when using it for detailed flowers, I find it hard to distinguish depth and clear contrasting when it comes to the flowers' different textures. Struggled to obtain

Acrylic
I loved the detail that I achieved with the coloured pencil studies and how much detail it creates but to make the piece more full, I could use this material on top of a layer of paint to achieve a more bold and fuller image.

I am most pleased with the outcomes of my acrylic studies and experimented on both my ideas focus and scenery - liking both. I love how easy it is to achieve clear detail.

Design Idea: 1

My first idea was to use the idea of a garden scene with a focus on a hedgehog in the middle of a garden. I thought about using a variety of materials to create a realistic scene. I thought about using a variety of materials to create a realistic scene. I thought about using a variety of materials to create a realistic scene.

Design Idea: 2

I thought about using a variety of materials to create a realistic scene. I thought about using a variety of materials to create a realistic scene. I thought about using a variety of materials to create a realistic scene.

Design Idea: 3

For my third design idea, I thought about using a variety of materials to create a realistic scene. I thought about using a variety of materials to create a realistic scene. I thought about using a variety of materials to create a realistic scene.

garden

vegetable patches
- rotten
- growing

fruit or vegetables

garden tools
- shed
- plant pots
- tools

Species of bird
- robin
- blue tit
- wood pecker

insects
- butterflies
- ladybugs
- spiders
- beetle
- bee

flowers

Nancy Medina

Floral artist ~ acrylic
This artist is relevant to my work because for my final piece I want to see my painting in an organic, floral garden surrounded by wildlife. I'll use the style of this artist for the floral design of my final piece as I enjoy the look of it.

I love the shape of the flowers in her paintings and mine to use mine in my final design, or similar.

Here, I copied one of her paintings in my own style as well as trying to incorporate Nancy's style into it too.

I really enjoyed the floral way she paints and did my best to mimic the way she creates detail. In this painting especially I love the soft tones as it creates a delicate image of the flower, showing the flowers appearance. I will use inspiration from this flower for the flowers in my final piece.



Ann Squire Wildlife Art

her artwork focused on nature. Anne to bring full works.

the Squire's background mainly of nature.

have a them bottom of hedgehog and the column.

In this piece, Anne Squire used pastels and colouring pencils (the medium that I used) to capture the scene of a robin that sings on a tree every morning by her bedroom window. This inspires that the scene was in her garden, which is why I included this piece in this research.

I re-created Ann's hedgehog piece. The image is set in a garden as its name is 'Hedgehog in Garden'. This linked really with the garden theme and is a route that I'd like to go down with the theme. I used watercolour for the background and pencil/dragon on the hedgehog itself to fill with the details use of varying materials.

Watercolour flower

Ann Squire says that her preferred mediums are oil, pastel and acrylic but she's been recently challenging herself with coloured pencils to capture light.

"Morning has broken"

"at the bottom of the garden"

**EXTERNALLY
SET TASK**