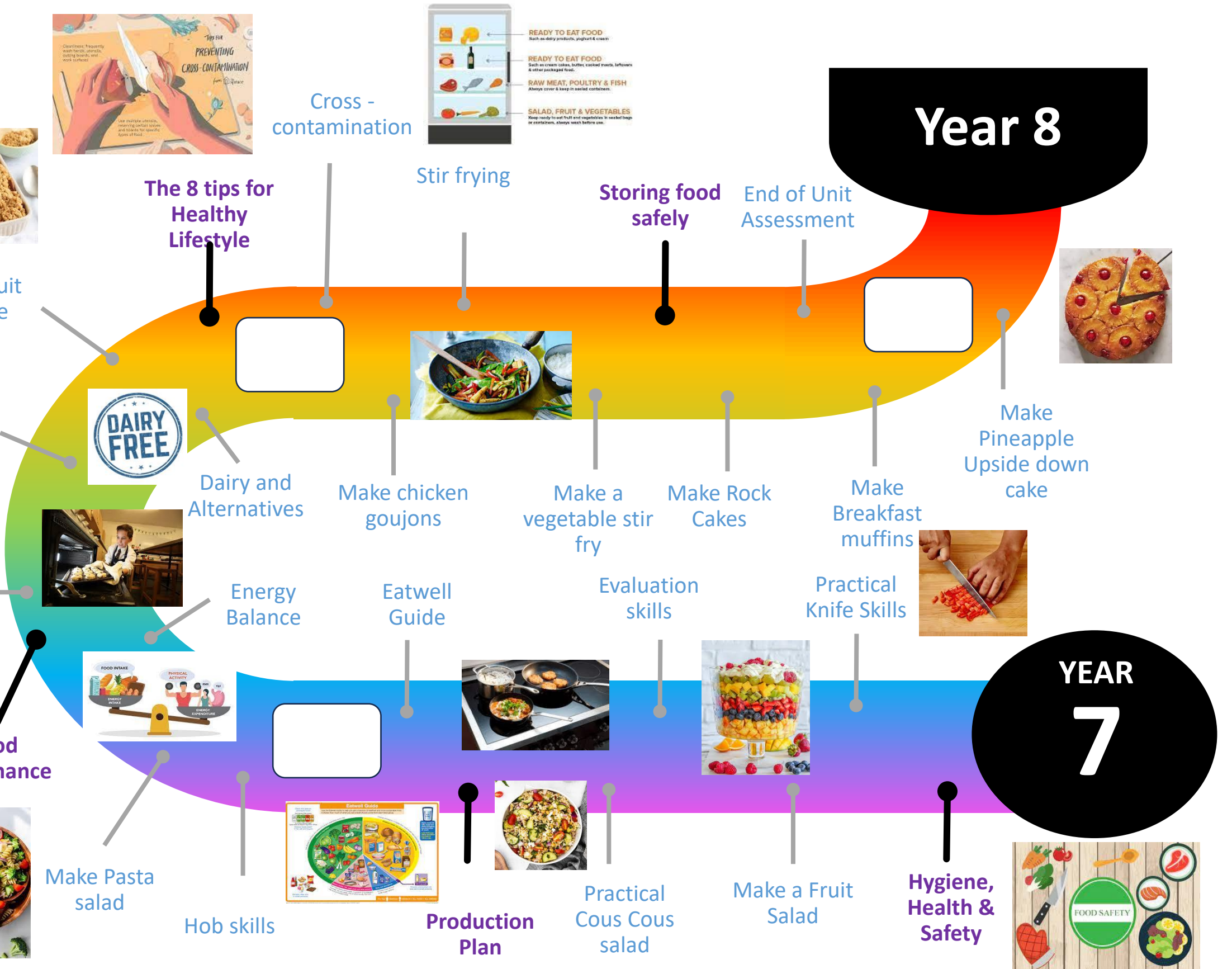


Year 7 Learning Journey

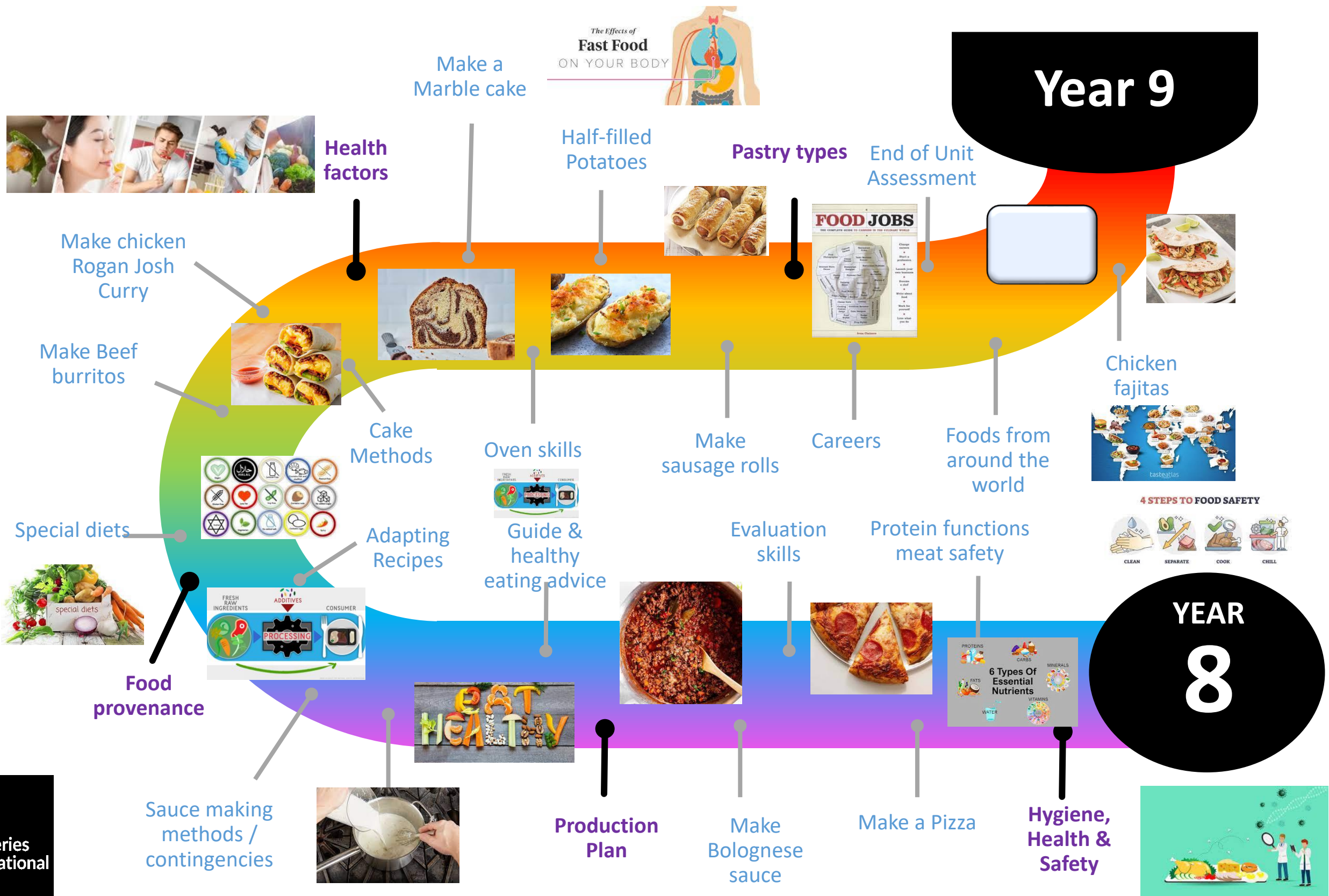


Year 8

YEAR 7

Year 8 Learning Journey

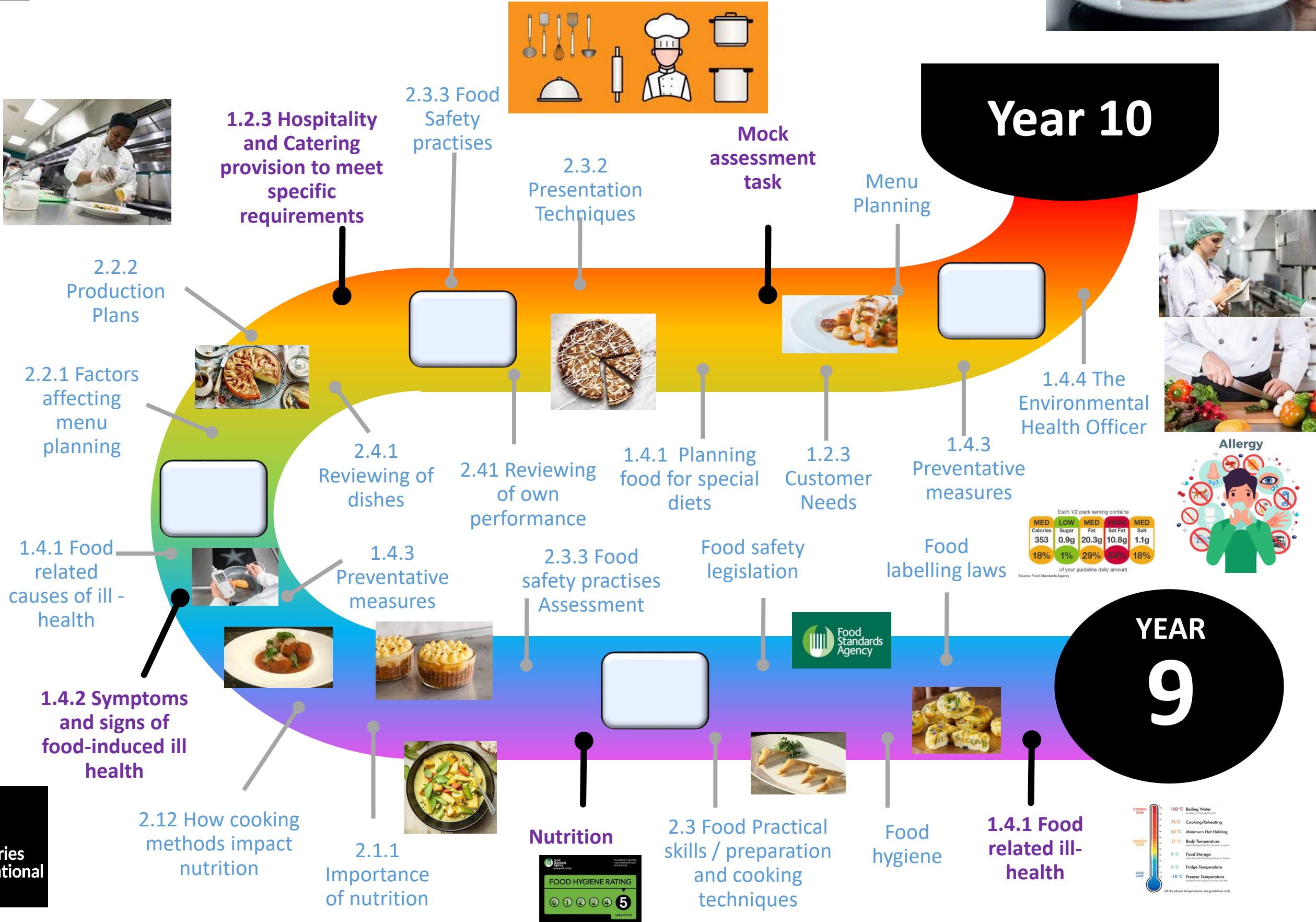
Learning Journey | Food & Nutrition



Year 9 Learning Journey



Learning Journey | Hospitality & Catering

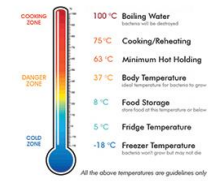


Each 1/2 pack serving contains

MED	LOW	MED	HIGH	MED
Calories	Sugar	Fat	Sat Fat	Salt
353	0.9g	20.3g	10.8g	1.1g
18%	1%	29%	64%	18%

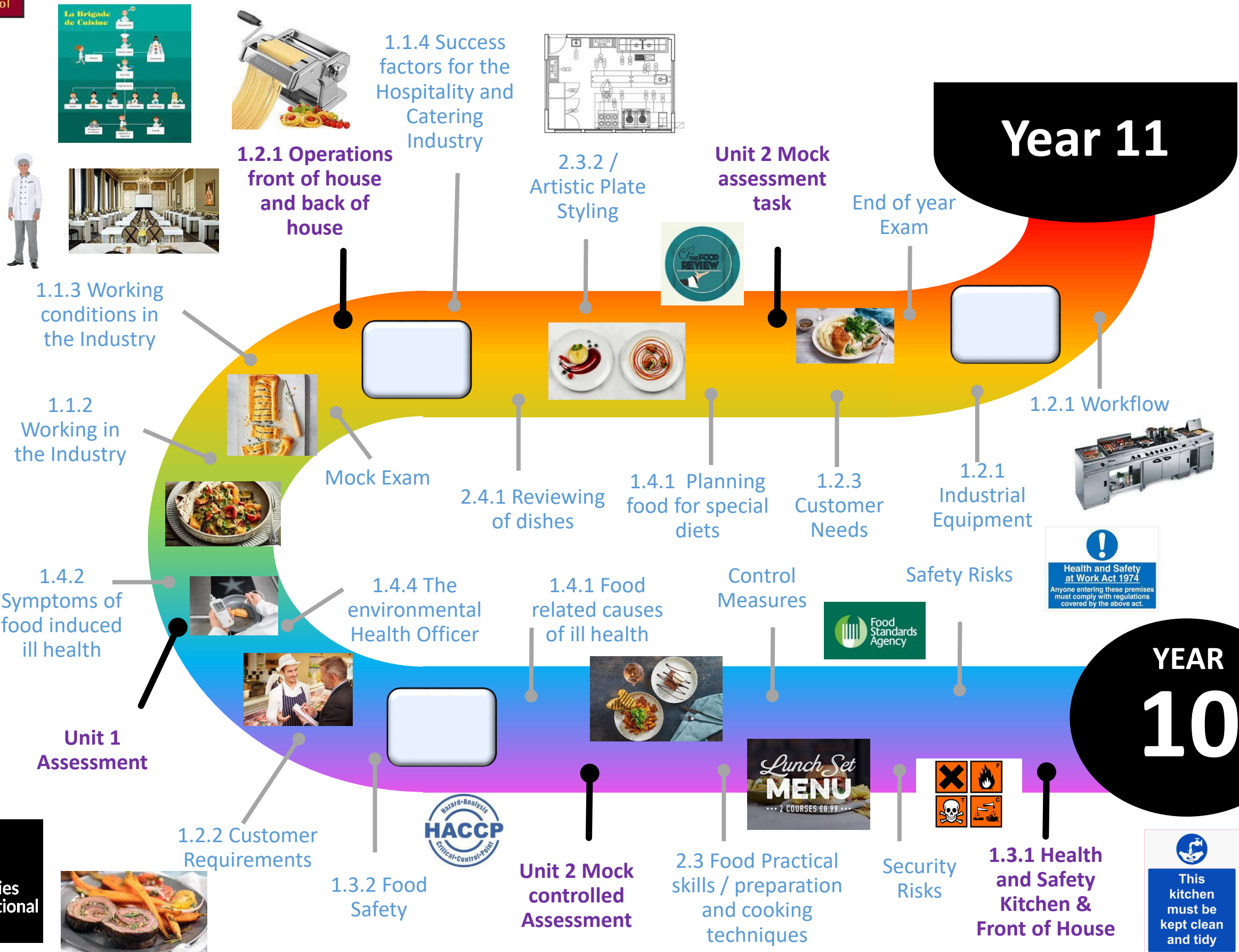
of your guideline daily amount

Source: Food Standards Agency



Year 10 Learning Journey

Learning Journey | Hospitality & Catering



Year 11

YEAR 10

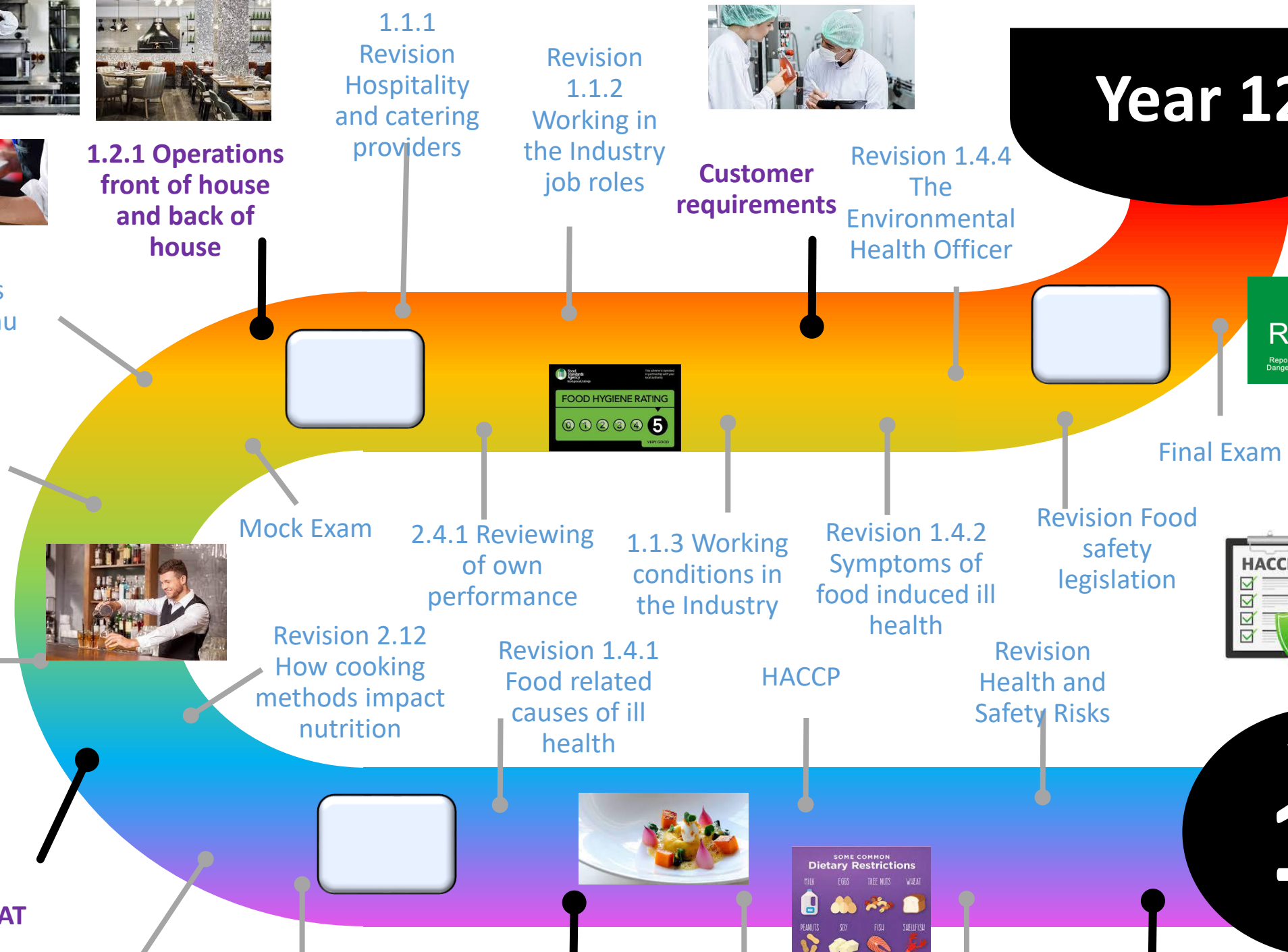
Year 11 Learning Journey



Learning Journey | Hospitality & Catering



Year 12



Revision 1.2.2 Customer Requirements

Revision 1.4.4 The environmental Health Officer

Unit 2 Mock controlled Assessment

2.3 Food Practical skills / preparation and cooking techniques

1.4.1 Planning food for special diets

Unit 2 Nutrition

1.1.1 Revision Hospitality and catering providers

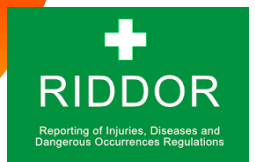
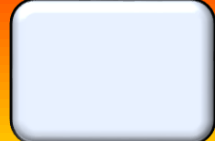
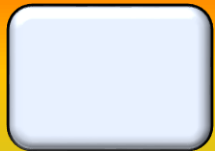
Revision 1.1.2 Working in the Industry job roles

Customer requirements

Revision 1.4.4 The Environmental Health Officer

2.2.1 Factors affecting menu planning

1.2.1 Operations front of house and back of house



Final Exam

2.3.2 Presentation Techniques

Mock Exam

2.4.1 Reviewing of own performance

1.1.3 Working conditions in the Industry

Revision 1.4.2 Symptoms of food induced ill health

Revision Food safety legislation



2.2.2 Production Plans



Revision 2.12 How cooking methods impact nutrition

Revision 1.4.1 Food related causes of ill health

HACCP

Revision Health and Safety Risks

YEAR 11