

## Our Vision & Values

**Mrs Grant**  
**Head of School**



### Respect

Be respectful and supportive to one another.



### Engage

Always engage and be positive.



### Achieve

Aspire to be the best and be prepared to take risks along the way.



### Community

Help to create a community which values trust, fairness, honesty and loyalty



### Hard Work

Always be determined and persevere in everything you do.



**Mrs Burke**

Assistant Head Teacher  
Safeguarding and SEND

# **Safeguarding**

**All staff are responsible for safeguarding in school**

**Mrs Lisa Burke Assistant Head teacher/ DSL**

**Miss Abbie Goodwin DDSL**

**Mrs Grant Head of School**

**Head of Year – Mr Yeomans**

## Safeguard Role

- protecting children from maltreatment
- preventing the impairment of children's mental and physical health or development
- ensuring that children grow up in circumstances consistent with the provision of safe and effective care
- taking action to enable all children to have the best outcomes

Safe Children are able to learn and flourish

# **RESPECT**

**Mr Goodwin**

Assistant Head Teacher  
Behaviour and Rewards



## Behaviour and Rewards





# Moorside High School

Potteries Educational Trust

**IT'S TIME FOR AN ATTENDANCE PRIZE**

Be in school from January 2025 to July 2025!!

This is your chance to turn 100% attendance into an EPIC REWARD!

Perfect Attendance = Automatic Entry  
Prize Draw Includes:

A brand-new Xbox Series X (KS3) 🎮  
The incredible Fire Max 11 Tablet (KS4) 📱

✓ Come to school every day  
✓ Stay committed  
✓ Get rewarded like never before!

Don't miss out - your perfect attendance could make YOU the lucky winner!

Are YOU up for the challenge? Let's make it happen!

Next attached



# Expectations

- Be on time for all lessons
- Go to all lessons
- Attempt all work that is asked
- Be nice and respectful to each other and staff
- Follow the behaviour policy
- Follow the uniform policy
- Be ready and prepared for every lesson





## Lates and Timings

- Students have 5 minutes to be sat down in the lesson and ready to learn. If students are later than this, a 20-minute late detention will be issued.
- If a student is not in lessons after 10 minutes without a corridor pass it will be an immediate red card.
- Walking out of a lesson without permission is not allowed and will be a Red Card.
- Students cannot walk out of lesson without permission.
- **Ask the member of staff for a pass.**

## Moorside High School Success Scale

Student has exceeded all expectations within the lesson = +3 house points



Student has demonstrated all REACH values in the lesson = +2 house points



Student has shown clear endeavour to demonstrate all REACH values  
= +1 House Point (Starting point for all students)



1<sup>st</sup> / 2<sup>nd</sup> Warning or **REFLECT** = Email/Phone call home.



Yellow Card **REFORM** = Referral log, 25 min detention & Phone call home



Red Card **RESET** = 2 hours & 1 social time.

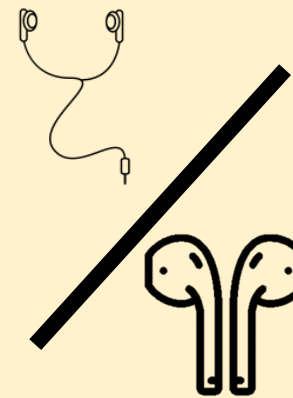
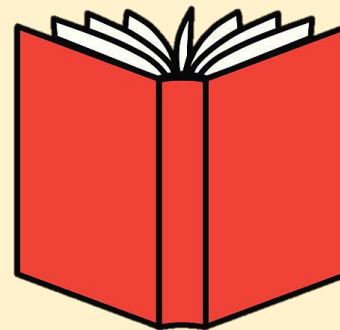
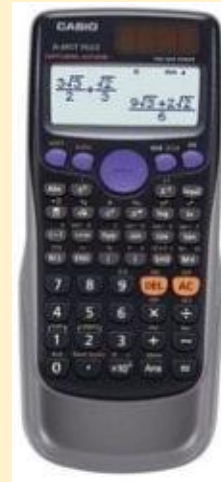


## Engage

Always engage  
and be positive.



## Do you have your equipment?



- ☐ Black/Blue pen
- ☐ Green pen
- ☐ School bag
- ☐ Water Bottle
- ☐ Pencil
- ☐ Ruler
- ☐ Highlighter
- ☐ Rubber
- ☐ Calculator
- ☐ Laptop (90% charged)
- ☐ Wired Earphones
- ☐ Reading book

## Community

Help to create a community which values trust, fairness, honesty and loyalty



# Uniform \*Check Uniform Policy

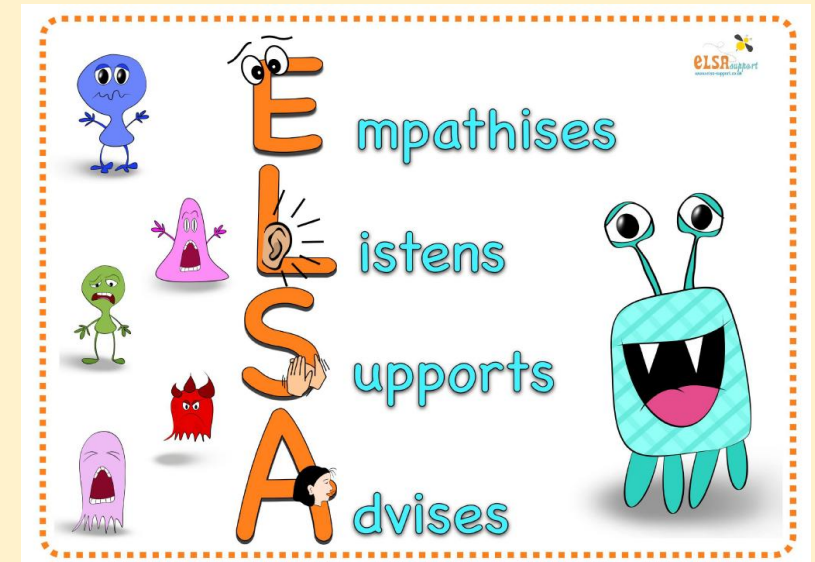
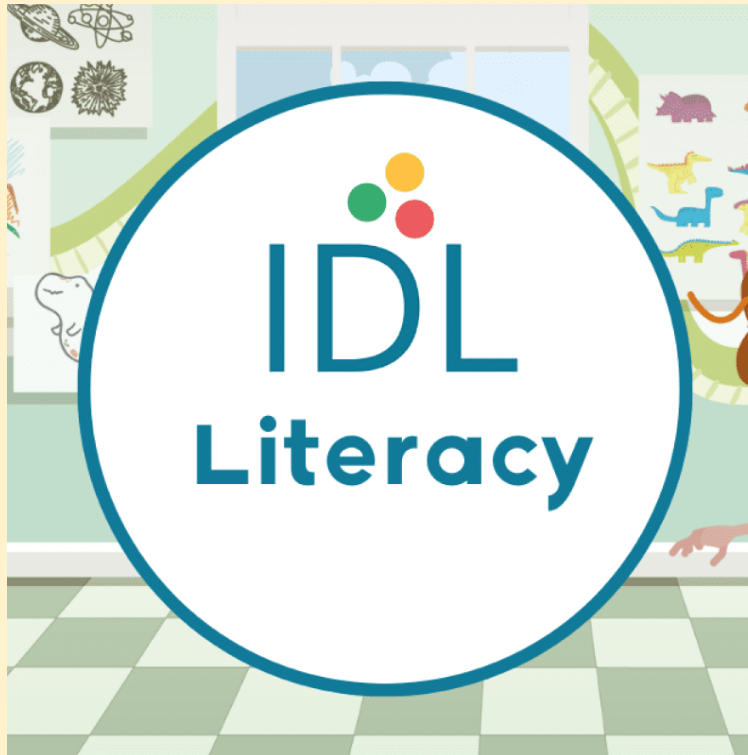
- A Black Blazer branded with the Moorside logo
- A grey, V-neck jumper. (optional)
- A plain white shirt/blouse
- A clip-on school tie (Red and gold Y7-Y10, Blue, red and grey Y11)
- Plain tailored black trousers or plain black knee length drop down pleated skirt
- Shoes – must be plain black leather style (trainers, canvas-style and ballet/dolly pumps are not permitted)



## Moorside PE Kit

- Red Moorside PE T-shirt with embroidered school logo
- Black Moorside PE jumper with embroidered school logo
- Black / Red shorts
- Black / Red leggings
- Black / Red Tracksuit bottoms
- Red Football socks
- All jewellery must be removed.
- All long hair must be tied up.
- shin pads and mouth guards (for contact sports)
- sports trainers with a flat sole and good ankle support

## Interventions



**Anti-bullying@mhs.potteries.ac.uk**

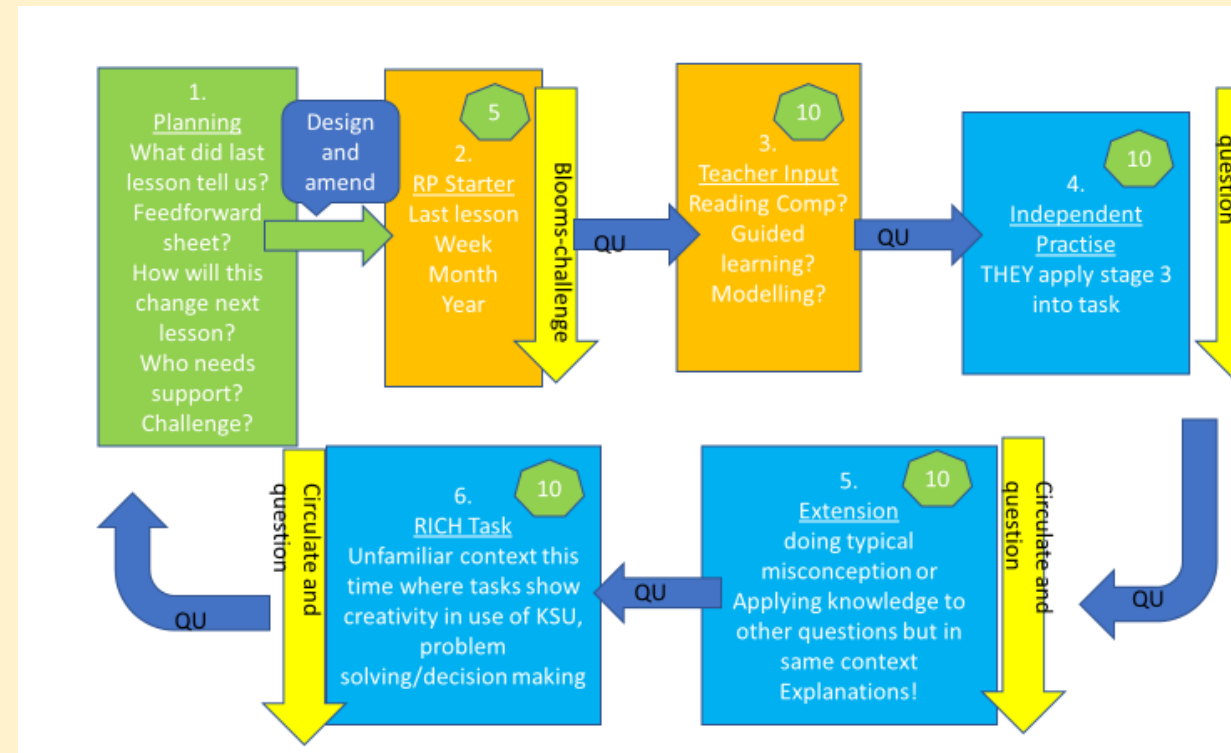
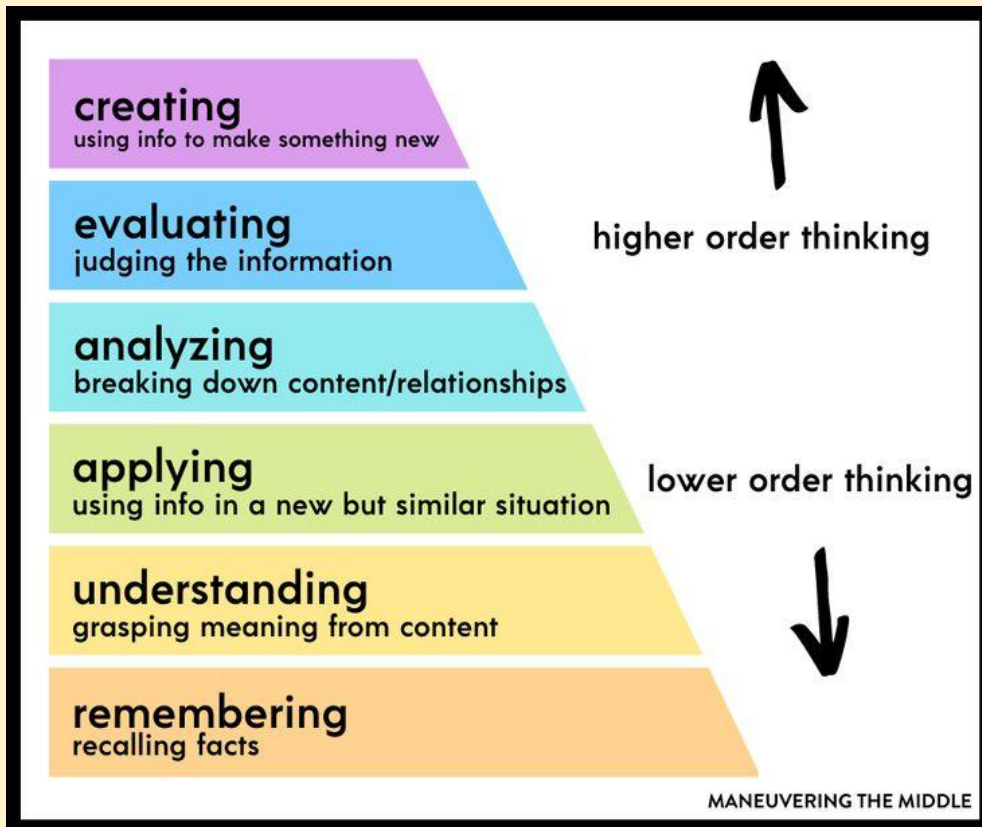


# **ENGAGE**

**Mrs Plant (Associate Assistant  
Head Teacher) and Mrs Burke  
(Assistant Head Teacher)**



## Mastery Learning



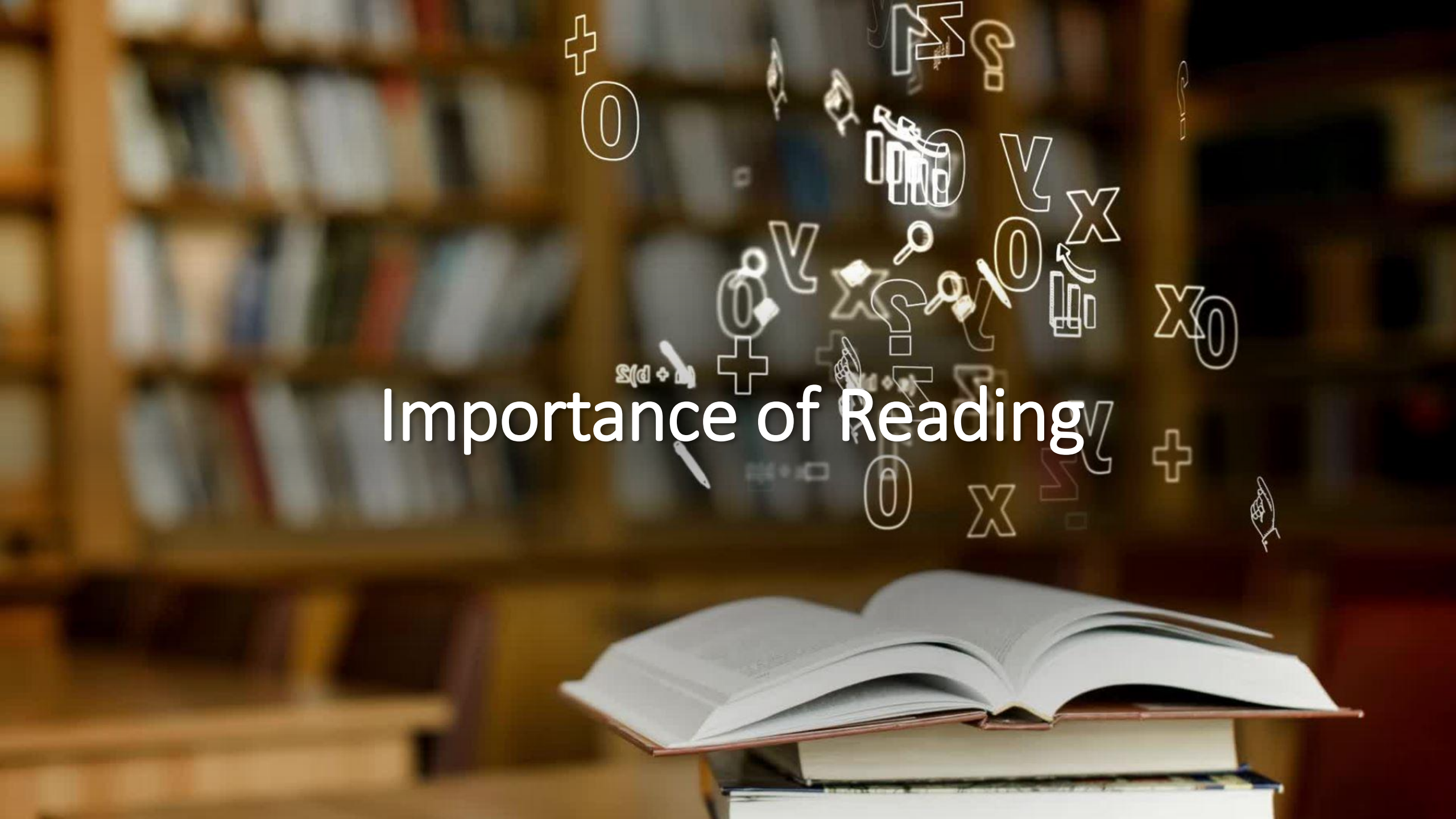
## Homework

- Microsoft Teams – homework is uploaded for the whole term.
- 10 minutes per subject, distributed over 2 weeks.
- Homework is set on Monday and needs to be completed by the following Monday.
- Students manage their own time.
- Students are rewarded with house points for completing homework.

## Hard Work

Always be  
determined and  
persevere in  
everything you  
do.



The background of the image is a blurred wooden bookshelf filled with books. In the foreground, a stack of books is shown, with the top one open. Floating around the open book are various white-outlined mathematical symbols and icons, including plus signs, zeros, question marks, infinity symbols, and a bar chart. The text "Importance of Reading" is centered over the open book in a white, sans-serif font.

# Importance of Reading



# SEND

---

- All learners are best supported in the classroom
- There is a dedicated team of qualified Teaching Assistants who support in class where needed, but the focus is on developing independence of our children
- Information is shared about the learning needs of children with staff via the pupil passports
- Additional support may be required outside the classroom-
- We provide a wide range of support packages for literacy/numeracy
- We are an ELSA school – supporting emotional literacy and Trauma informed trained





# **Achieve & Hardwork**

**Mrs Bell**

Assistant Head Teacher  
Curriculum and Personal  
Development

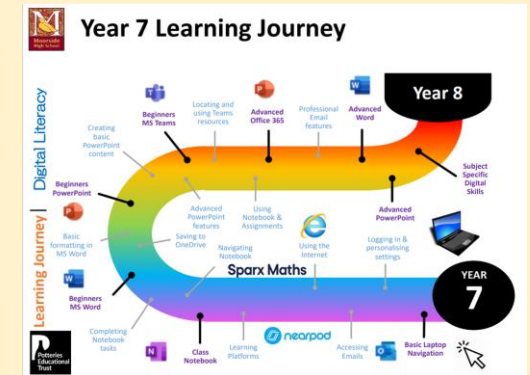
## Achieve

Aspire to be the best and be prepared to take risks along the way.



# Devices

- Devices are a key tool to support student progress at MHS
- Handout of the devices to students will take place by the end of the first week of term
- Digital learning journey will be followed to support skill development during the year
- There will be a parents' session on devices in September



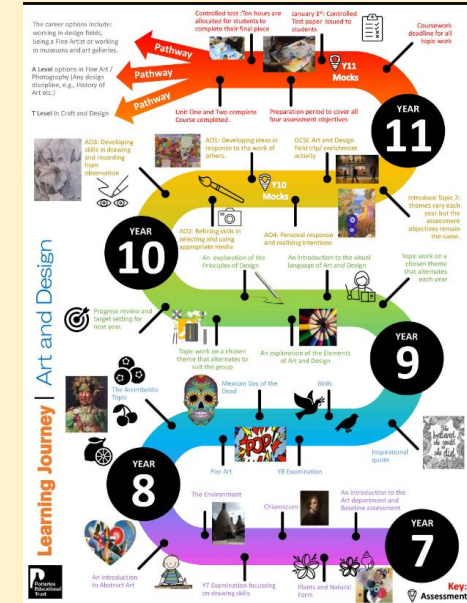
## Achieve

Aspire to be the best and be prepared to take risks along the way.



# Academic Progress

- Subject learning journeys outline our curriculum
- Progress reporting is via Data reports, twice during year 7
- Parents' Evening
- You can contact class teachers via email at any time for information about your child's progress in their subject



Course	Minimum Expected Grade	PPG
Art	6	7+
Biology	6	7+
Chemistry	6	7
English Language	6	7
English Literature	6	7-
German	6	5
History	6	8
OCR ICT	L2 Merit	L2 Merit
Maths	6	6
Physics	6	7-
Religious Education	6	6

## Electronic devices & Acceptable use of ICT

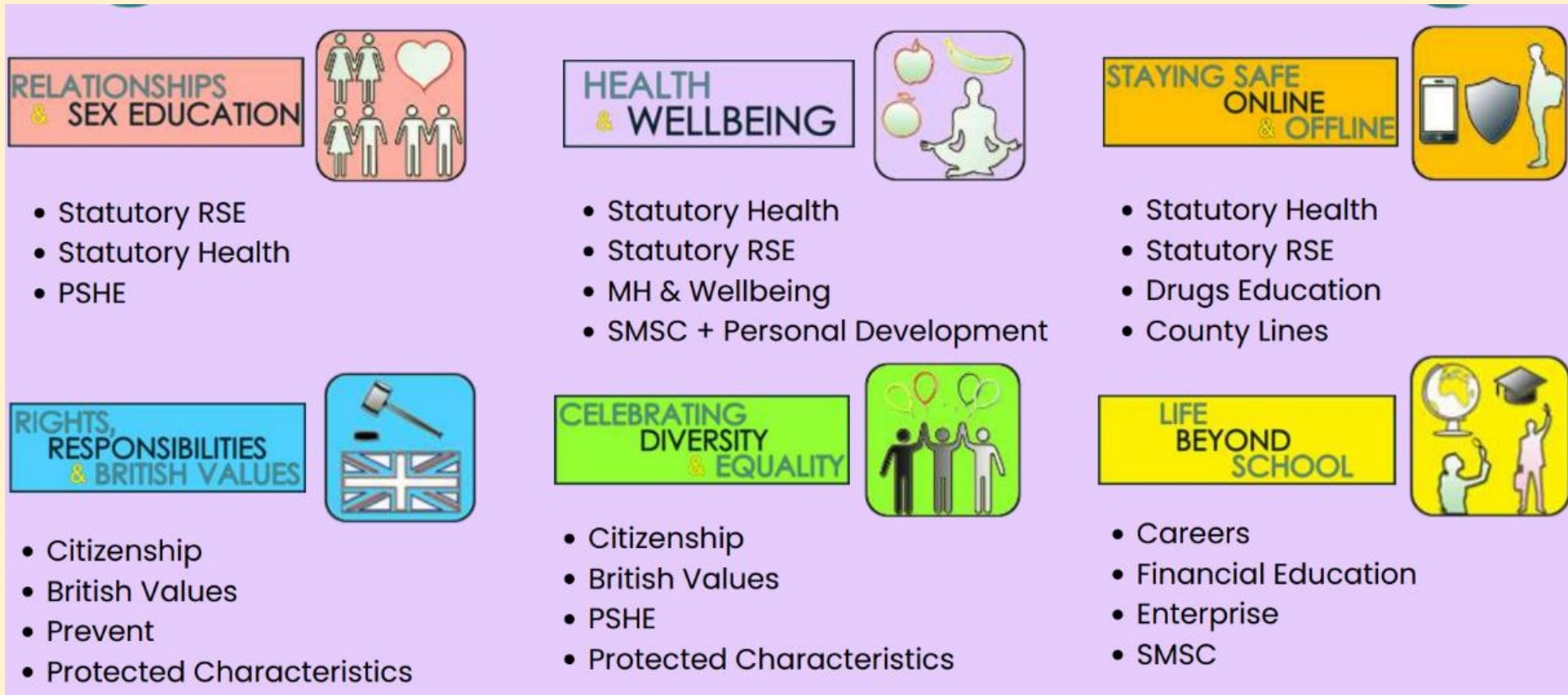
- **We ask you to read our policies regarding devices and the use of ICT CAREFULLY and to confirm that you accept them**
- Laptops
- Phones - **must be turned off and away during the school day**
- Headphones
- Smart watches

**The use of electronic devices in school, without the express permission of a teacher, will result in confiscation.**

Repeat issues may require you to collect your child's device from the school office.

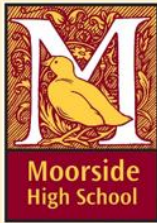


## Personal Development



unifrog

## Form time



**REACH Theme: ACHIEVE**

**Form Time  
Y7**



**Motivational  
Monday**

**Assembly**



**Transformational  
Tuesday**

**Personal  
Development**



**Workout  
Wednesday**

**Digital Skills**



**Thoughtful  
Thursday**

**Literacy**



**Fantastic  
Friday**

**B4L**



## Community

Help to create a community which values trust, fairness, honesty and loyalty



# Keeping in touch

We use Arbor as our key way of communicating within our community

We share the following information via Arbor;

- Sharing academic progress
- Celebrating Rewards and alerting you to behaviour issues or detention notifications
- Letters and key information about school events and trips
- Booking parents evening appointments
- Paying for school meals
- Paying for trips, clubs and equipment



# Arbor



## Community

Help to create a community which values trust, fairness, honesty and loyalty



# Collaboration with Parents/Carers

- Our Parent forum meets termly.
- We complete a parents/carers survey twice annually to gather views and drive improvements.



**Moorside  
High School**





# **Community**

**Mr Goodwin**  
**Assistant Head Teacher**  
**Behaviour and Attitudes**



NOT ALL  
CLASSROOMS  
HAVE FOUR  
WALLS



## Clubs & trips





## The House System





## Hard Work

Always be  
determined and  
persevere in  
everything you  
do.



# Punctuality & Attendance

- Attendance is crucial to a student's successful progress at school

**Excellent**

**100% - 99%**

**Good**

**99% - 95%**

**Unsatisfactory  
Improvement  
Required**

**94% - 90%**

**Serious Concern  
Persistently  
Absent**

**Less than 90%**

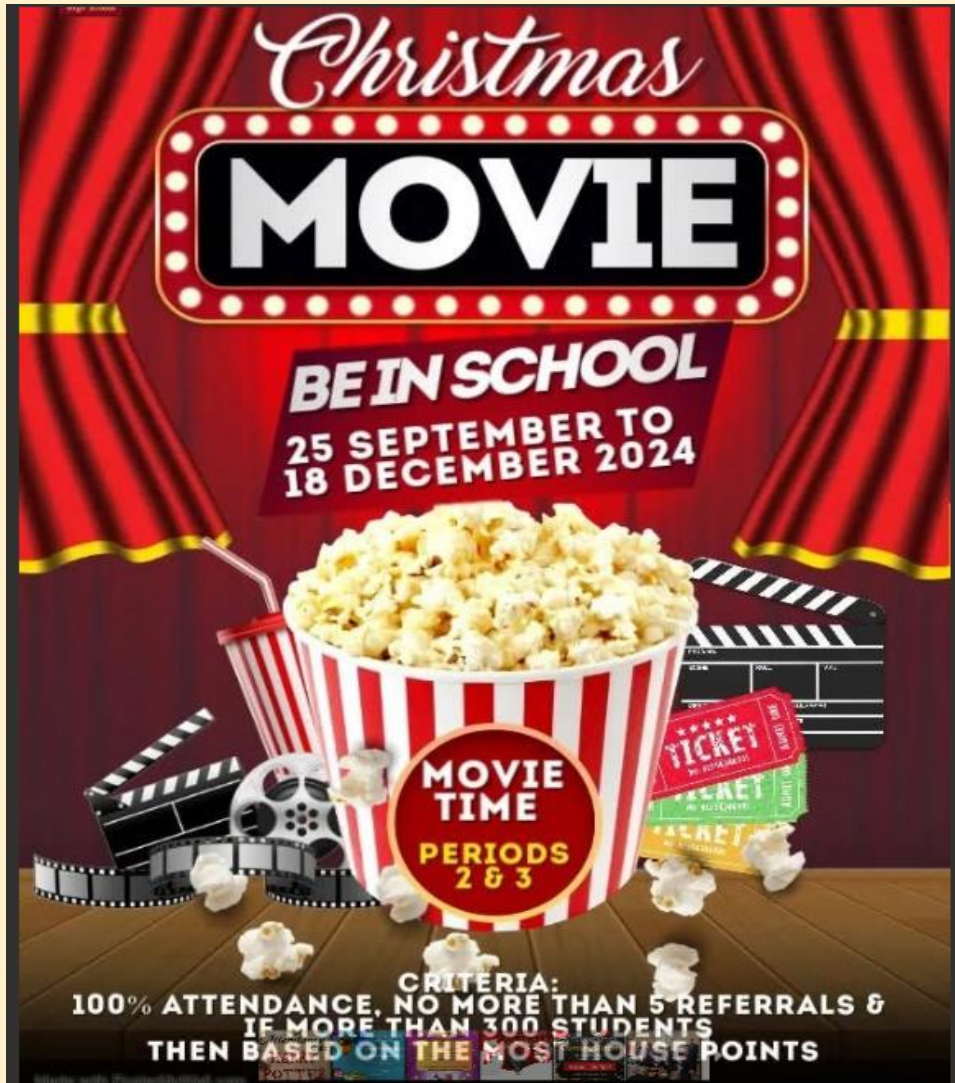
**5 minutes late  
per day  
=  
3 days lost per  
year**

**10 minutes late  
per day  
=  
6.5 days lost  
per year**

**15 minutes late  
per day  
=  
10 days lost per  
year**

**20 minutes late  
per day  
=  
13 days lost per  
year**

**30 minutes late  
per day  
=  
19 days lost per  
year**



# Practical Arrangements

Mr Yeomans  
Head of Year 7



## Everyday essentials

- Times of the day
- Cashless catering - Will be sorted on Wednesday 3rd September
- Bus passes/Free school meals – See Mrs Buckley at the end of the presentation in the canteen.
- Uniform - Just for kids in the canteen
- Equipment

<b>Tutor</b>	<b>8:40 - 9:00</b>
<b>Period 1</b>	9:00 - 10:00
<b>Period 2</b>	10:00 - 11:00
<b>Break</b>	11:00 - 11:15
<b>Period 3</b>	11:15 - 12:10
<b>Period 4</b>	12:10 - 13:10
<b>Lunch</b>	13:10 - 13:50
<b>Reading</b>	13:50 - 14:10
<b>Period 5</b>	14:10 - 15:10





## What Happens On The First Day?

- School starts on **Wednesday 3rd September no later than 8.40.** Prepared and ready for school.
- Report to the Main Hall via the school's reception.
- The rest of the day will be explained during the morning.



## Contacting Us About Issues

- If you have any concerns, please use email to contact your child's;
- **form tutor, for pastoral concerns**
- **class teacher/s for academic queries**
- You will receive acknowledgement within 2 working days and a comprehensive response within 3 working days.
- Other communication will come out via Arbor email or Facebook. Please lookout for our new facebook page from the 18th July.
- Please be aware that staff will not be accessing emails during the summer period.



**If you have any questions or need support,  
please go to the canteen for:**

**SEND – Miss Baylay  
Uniform – Just for Kids  
Free School Meals  
Bus Passes  
Devices – Mrs Bell**